

By Jessica Chiang

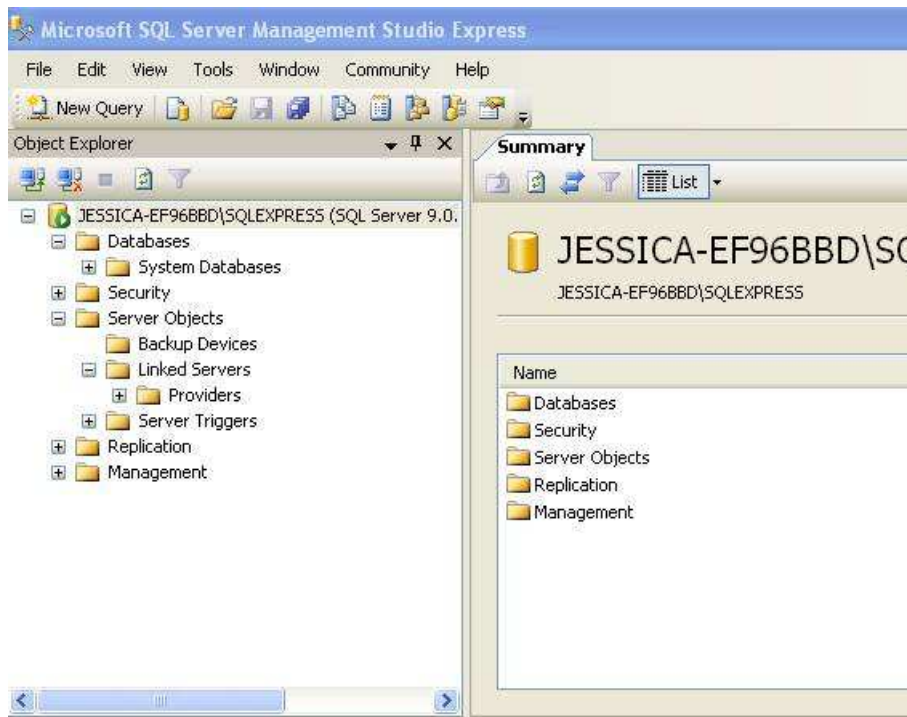
Step-by-Step Guide to Setup Tackle, the Web-Based SCRUM Tracking Site

1. **Log in as a Windows administrator. In our case, it's jessica.**
2. **Stop the Apache Web Server if it's running, using Apache Monitor. If Apache Web Server is running, IIS Web Server can not start because**

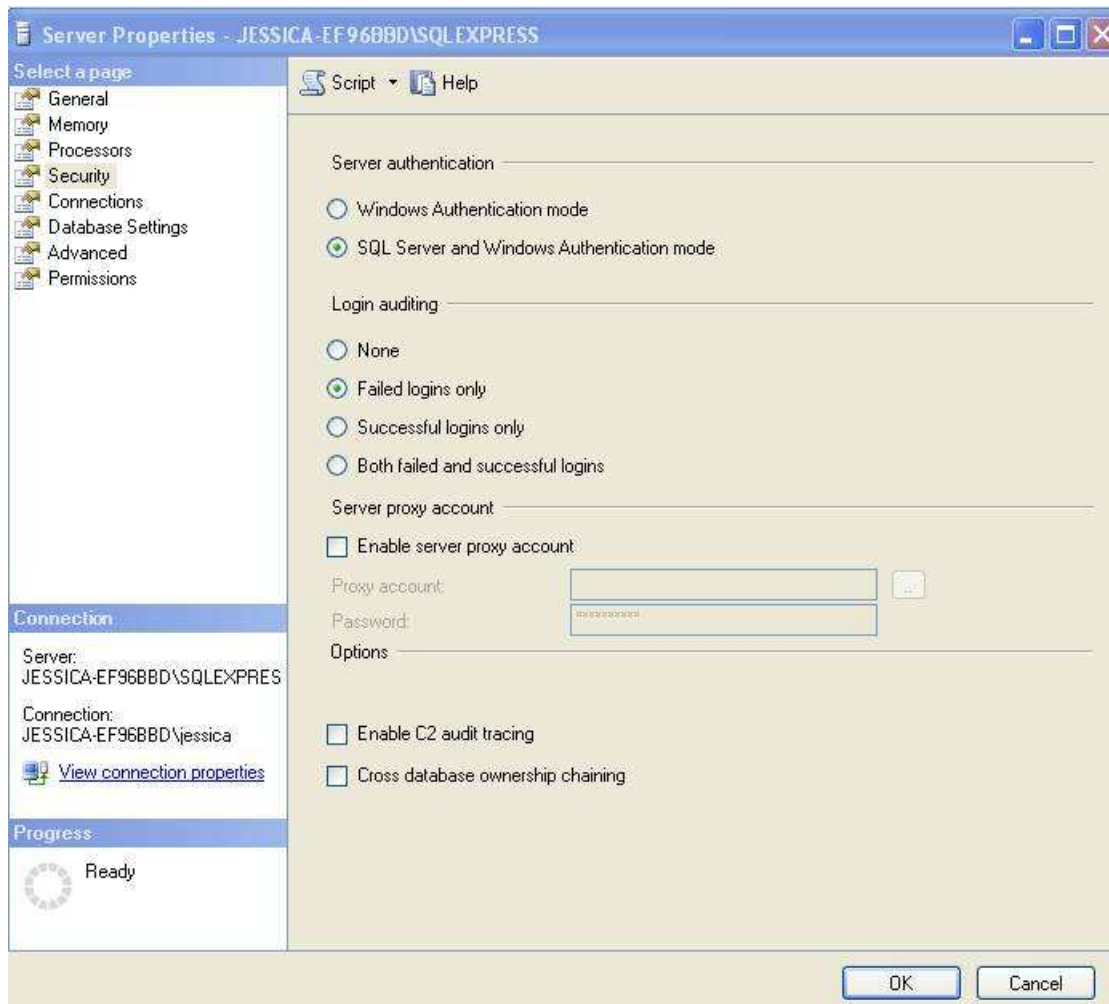


3. **Make sure that SQL Server 2005 Express is in mixed login mode (windows authentication and SQL authentication).**

Install [SQL Server 2005 Express](#) and SQL [Server Management Studio](#) if not already installed. Login to SQL Server using SQL Server Management Studio, then right click on the server, JESSICA-EF96BBD\SQLEXPRESS (SQL Server 9.0..). Then select Property.



At the *Server Property Prompt*, select *Security* page, and select *SQL Server and Windows Authentication mode* (mixed mode). Then hit OK.

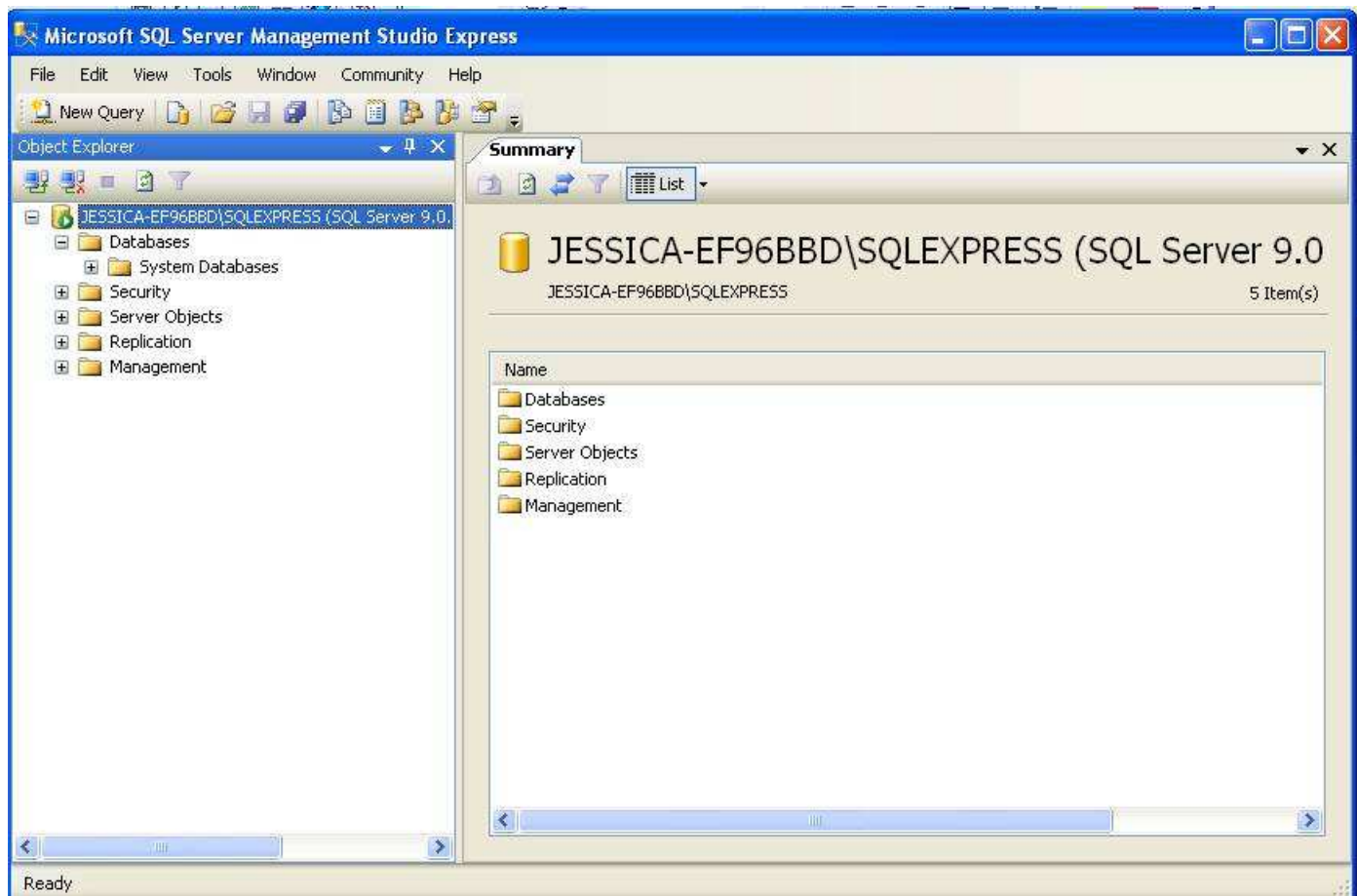


4. Install AJAXASP.Net and Report Viewer.

You can obtain **AJAXASPExtSetup.msi** from [the office Tackle website](#), and **ReportViewer.exe** from this [Microsoft download page](#).

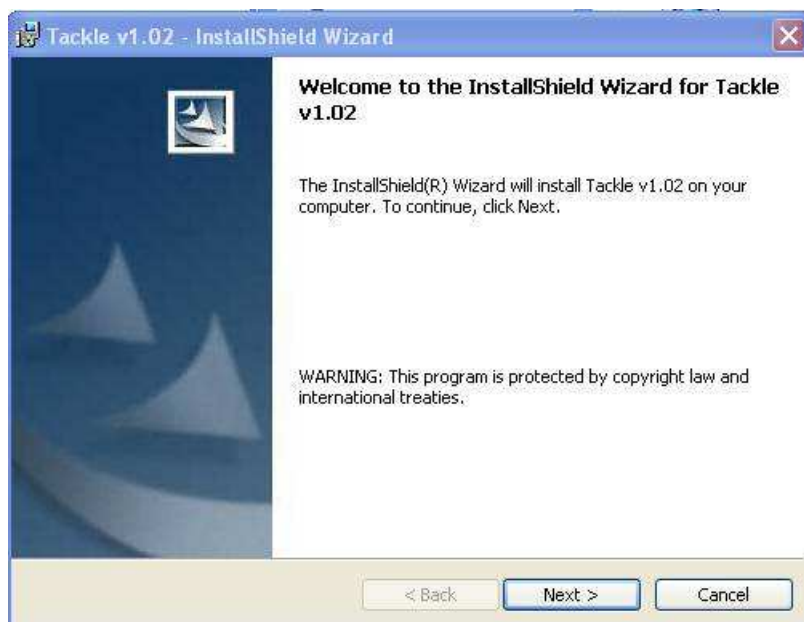
5. Obtain system information required to install Tackle

Obtain **SQL Server instance name** using SQL Server Configuration Manager that came with SQL Server 2005 Express. As the screenshot below shows, the SQL Server instance name in this example is **JESSICA-EF96BBD\SQLEXPRESS**.

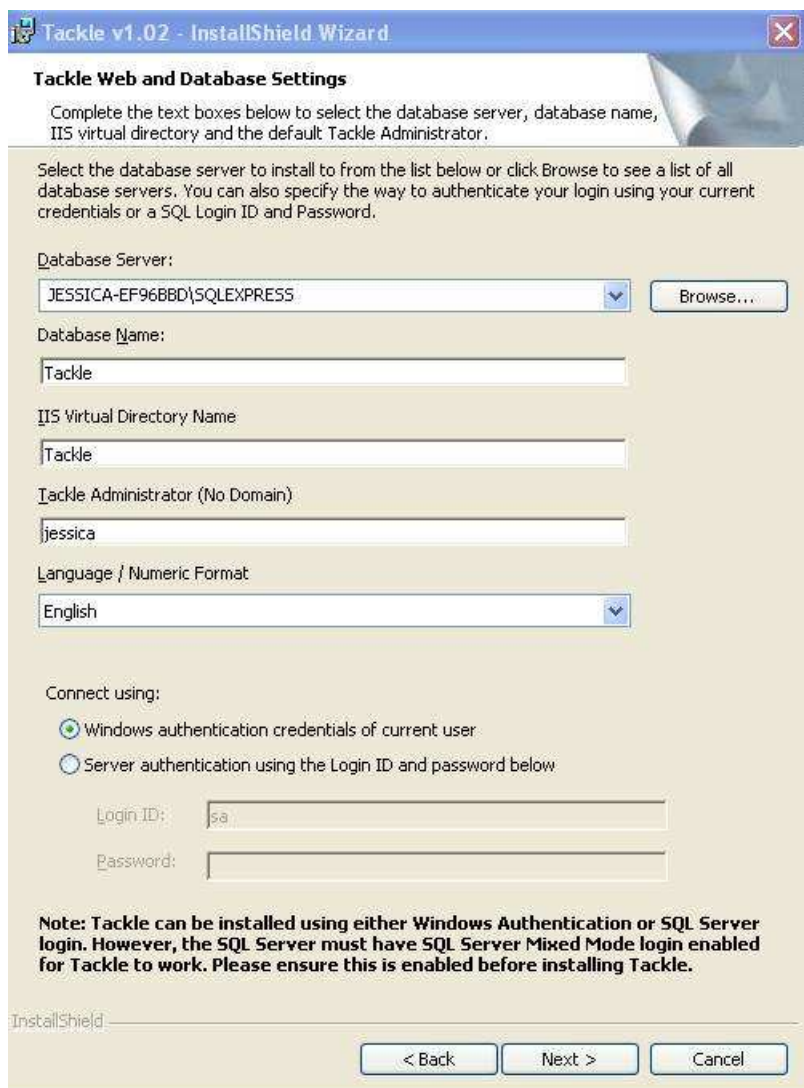


6. Install Tackle

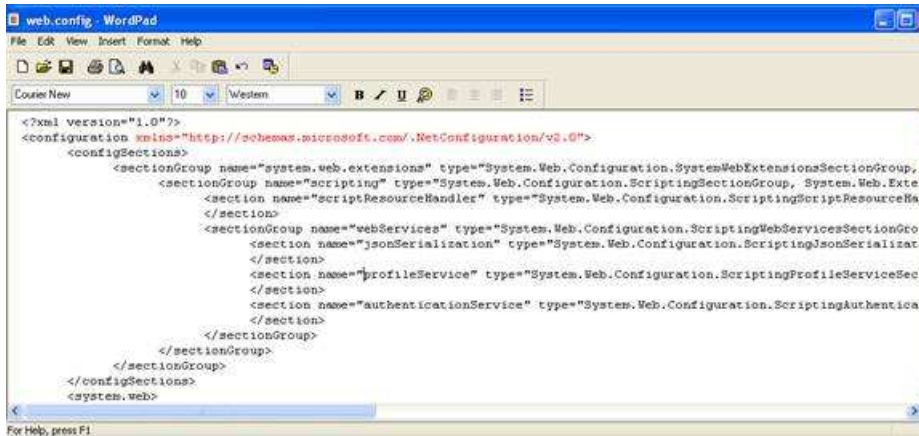
Double click **Tackle v1[1].02.msi**,



Click Browse button to find the SQLServer name but replace (local) with the machine name found in step 5. Enter the Windows Administrator account you wish to use for Tackle Administrator.



Open **C:\Inetpub\wwwroot\Tackle\web.config** and search for *xmlns*, and remove all strings starts with *xmlns*, as shown in red below.



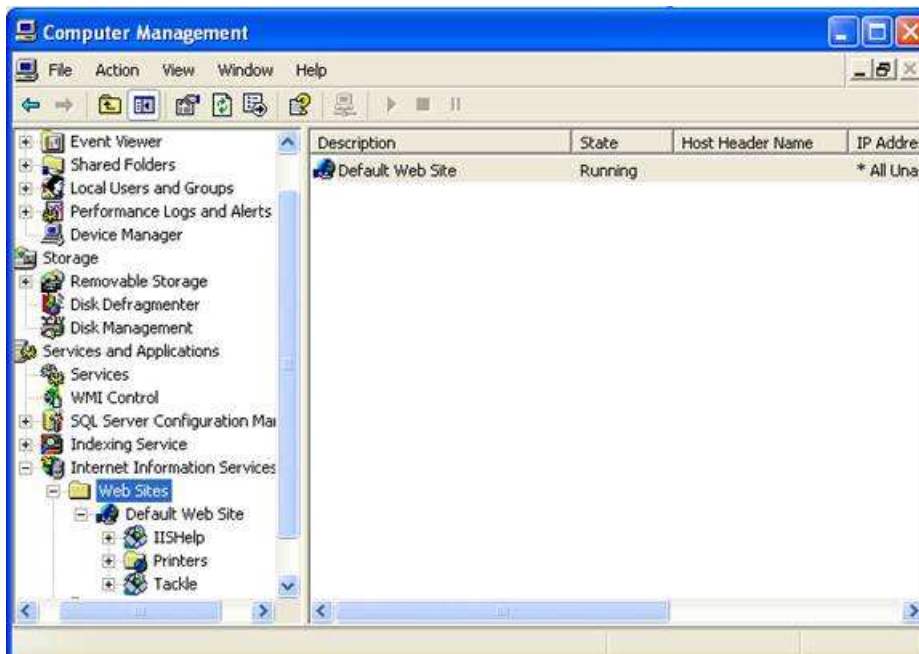
```

<?xml version="1.0"?>
<configuration xmlns="http://schemas.microsoft.com/.NetConfiguration/v2.0">
  <configSections>
    <sectionGroup name="system.web.extensions" type="System.Web.Configuration.SystemWebExtensionsSectionGroup,
      <section name="scripting" type="System.Web.Configuration.ScriptingSectionGroup, System.Web.Exte
      <section name="scriptResourceHandler" type="System.Web.Configuration.ScriptingScriptResourceHan
    </section>
    <sectionGroup name="webServices" type="System.Web.Configuration.ScriptingWebServicesSectionGrou
      <section name="jsonSerialization" type="System.Web.Configuration.ScriptingJsonSerializat
    </section>
      <section name="profileService" type="System.Web.Configuration.ScriptingProfileServiceSect
    </section>
      <section name="authenticationService" type="System.Web.Configuration.ScriptingAuthenticat
    </section>
    </sectionGroup>
  </sectionGroup>
</configSections>
</system.web>

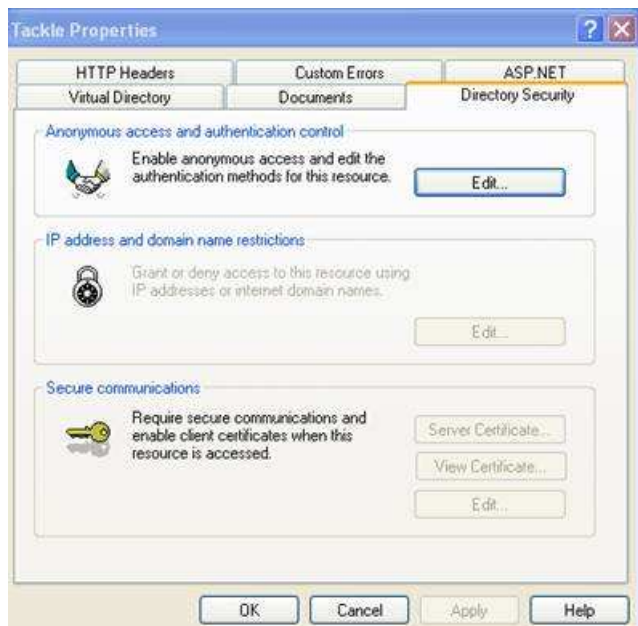
```

To set IIS web site permission, use Computer Management utility. On Windows 2003 server, go to **Start->Administrative Tools->Computer Management**. On Windows XP, go to **Control Panel ->Administrative Tools->Computer Management**.

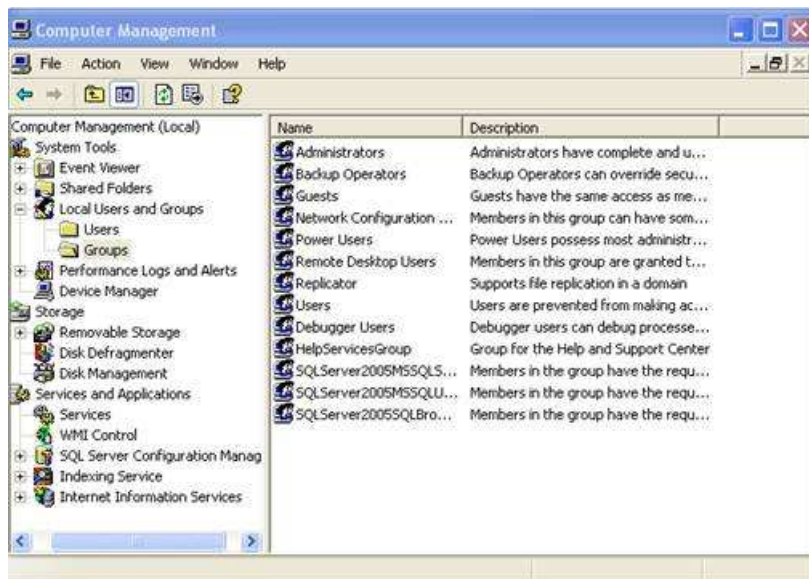
Go to **System Tools->Service and Applications->Internet Information Services->Web Sites**, and then start the **Default Web Site** if not already started. Make sure that Apache Web Server is stopped if it's running, because both Apache Web Server and IIS Web Server listen to port 80.



Then right click on *Tackle*, select *Property*, and select *Directory Security* tab. Click the Edit button. Then set the directory security as shown. Make sure that *Anonymous access* checkbox is checked, and *Integrated Windows Authentication* is checked.



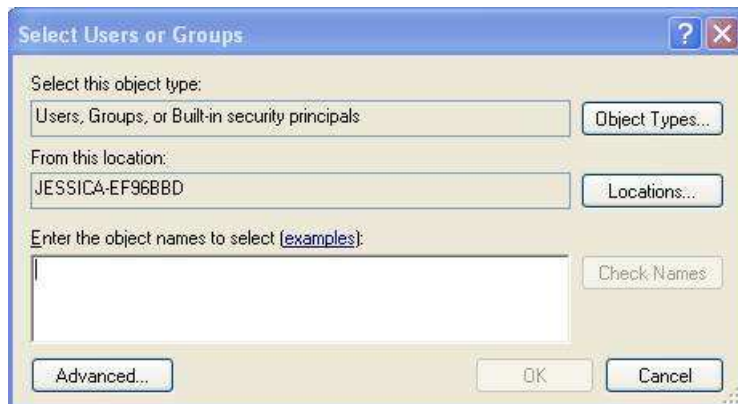
Next, set the directory permission for *C:\inetpub\wwwroot\Tackle* directory. First, create a Group called **IIS_WPG** and then add Tackle users to this group. Go to Computer Management->System Tools->Local Users and Group. Right click on Groups and select *New Group* to add a new group named **IIS_WPG**. Then add user **jessica** to the group.



Enter IIS_WPG for Group name, and some simple description to describe this group. Then click Add to add the administrator member to this group.

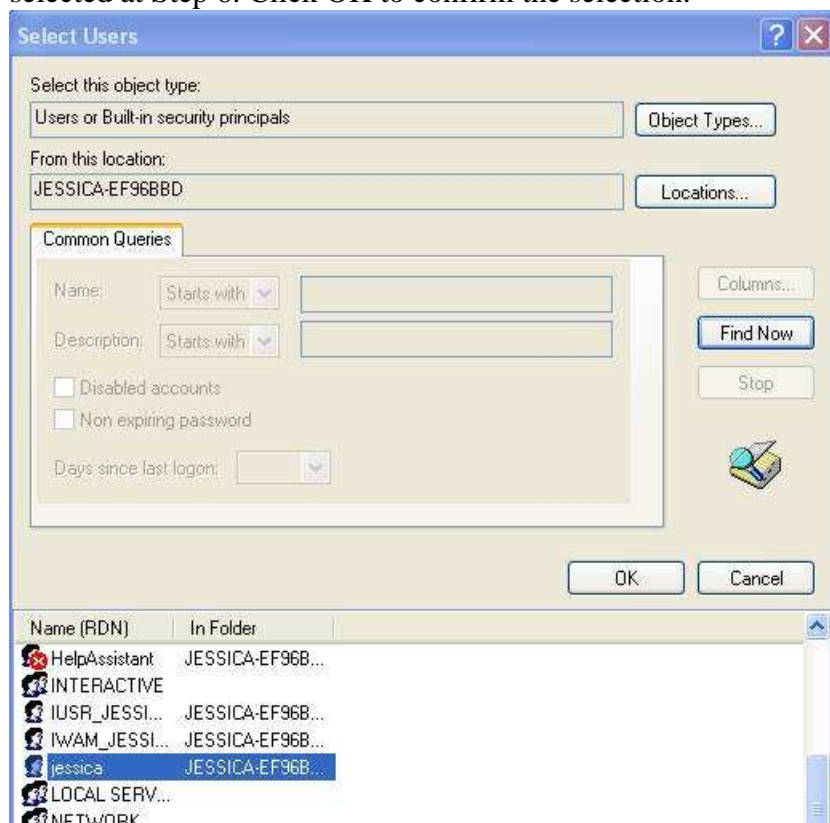


Click the *Advanced* button.

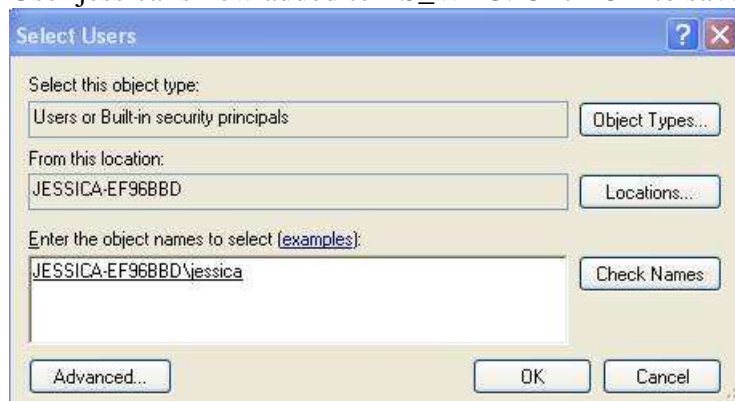


Click the Find Now button to browse all Users and Groups. Select Jessica, which is the administrator account

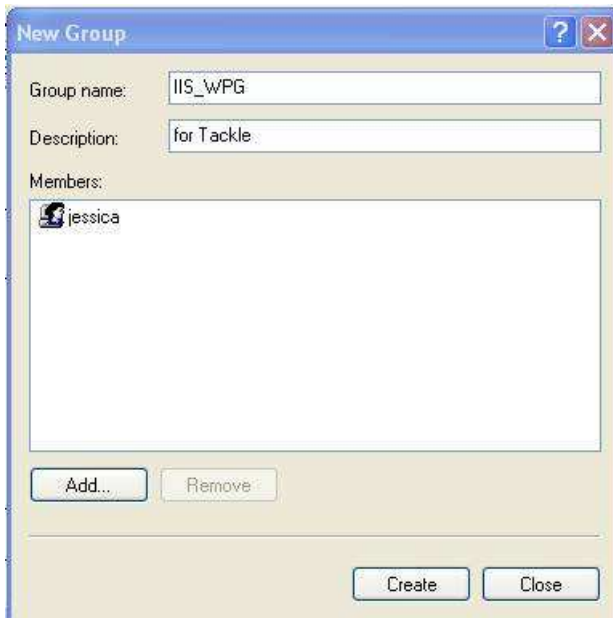
selected at Step 6. Click OK to confirm the selection.



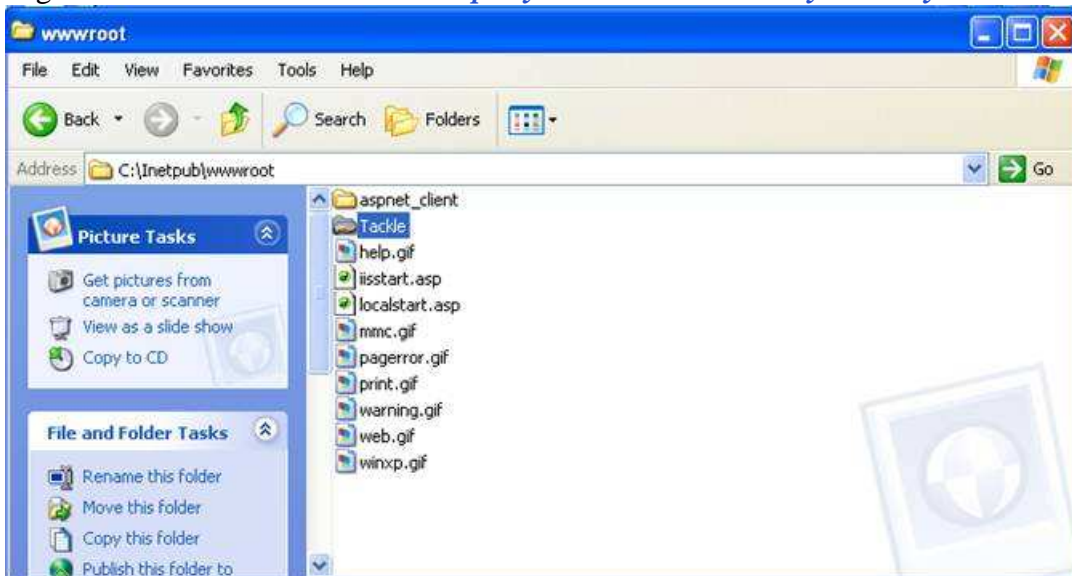
User jessica is now added to IIS_WPG. Click OK to save.

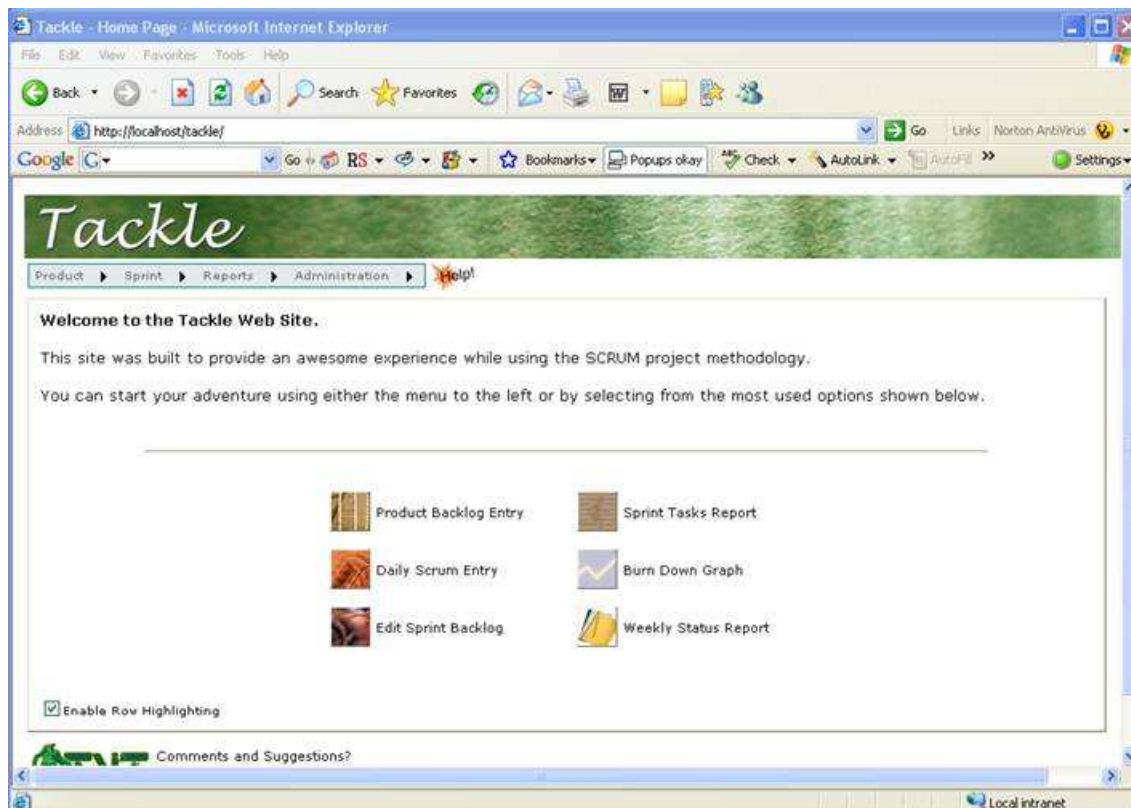
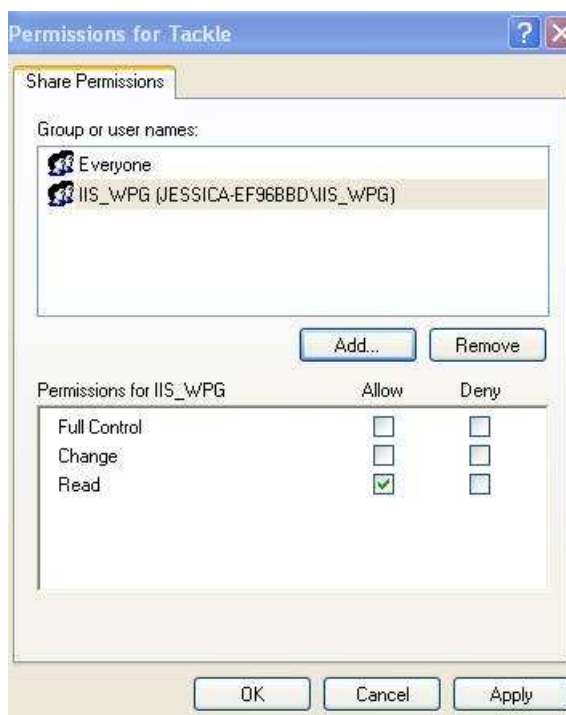


Click Create to create this new group, IIS_WPG.



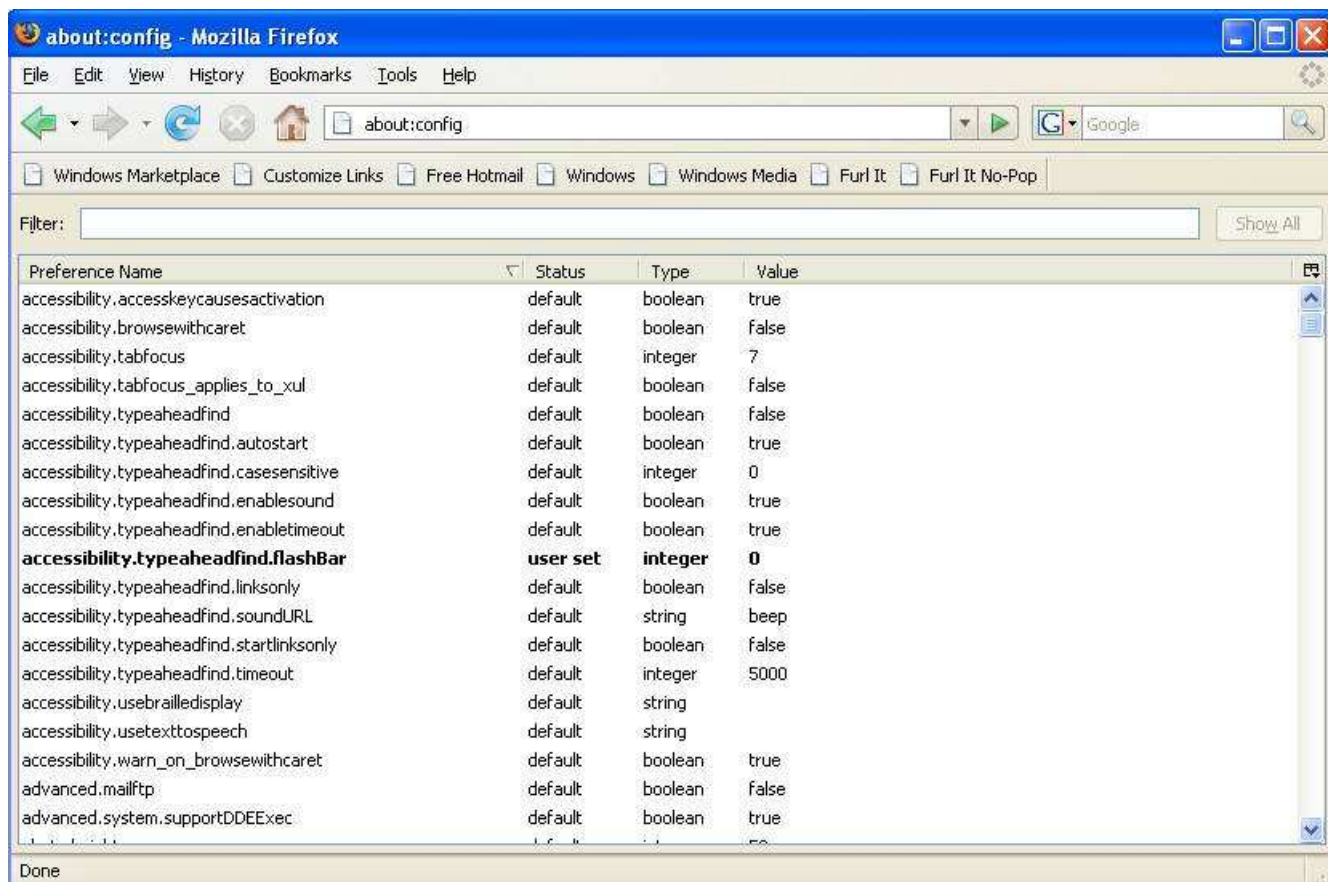
Right click on *Tackle* and select *Property*. Then click *Directory Security* tab.



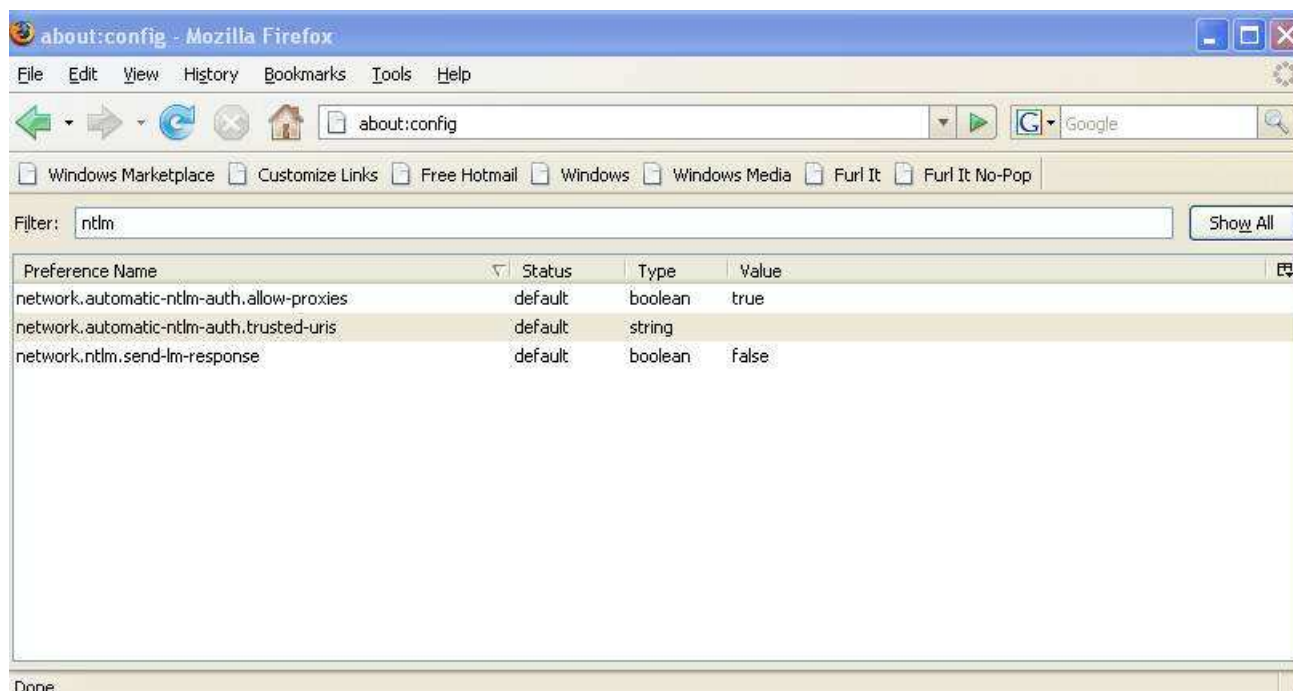


7. Trouble Shooting

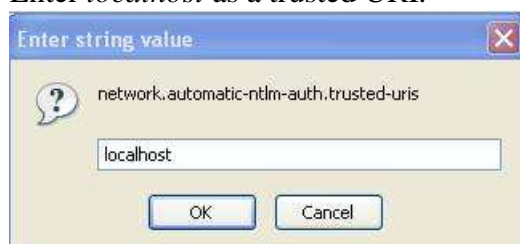
- **Firefox on IIS Problem**



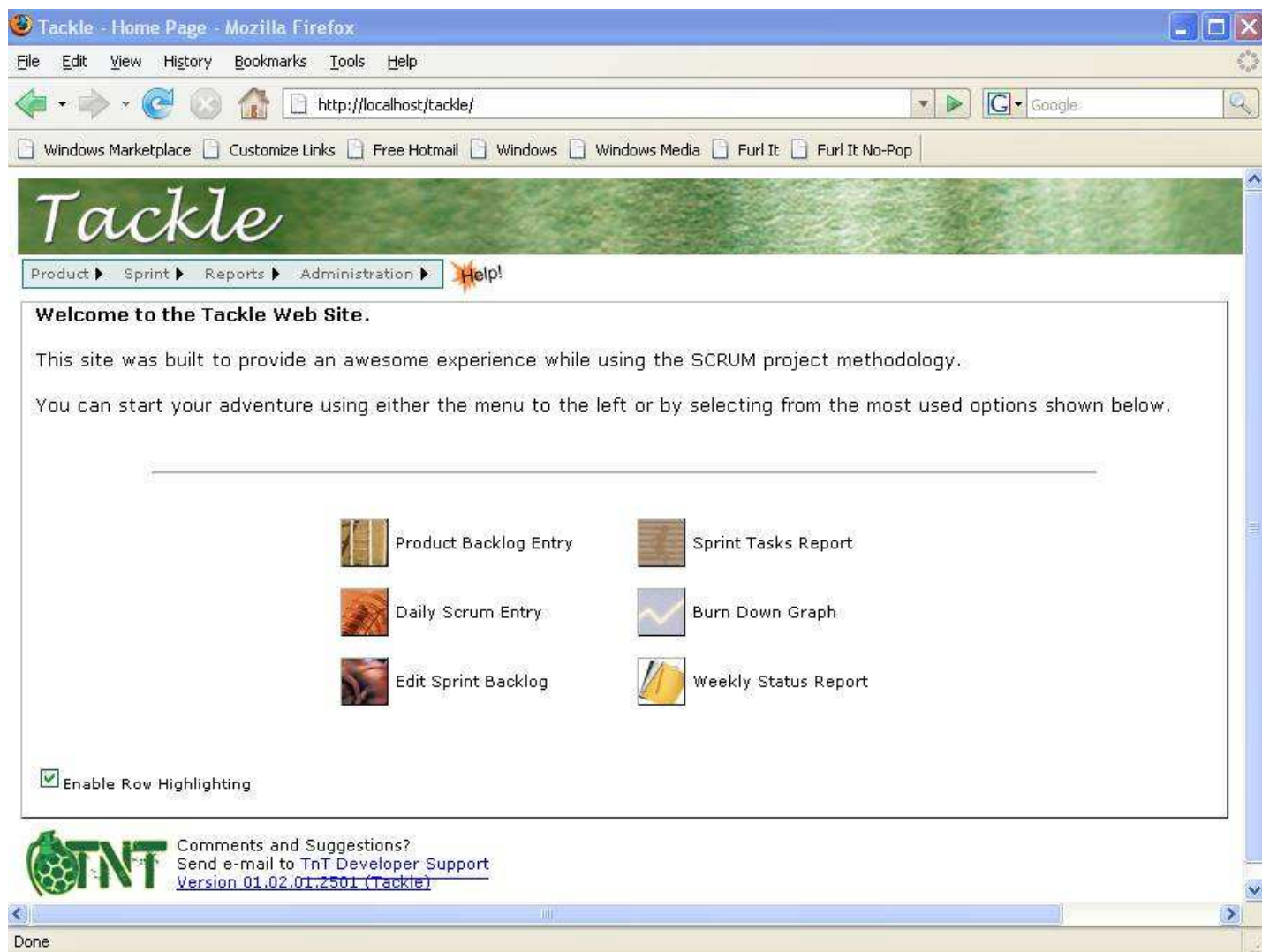
Enter *ntlm* as Filter.



Enter *localhost* as a trusted URI.

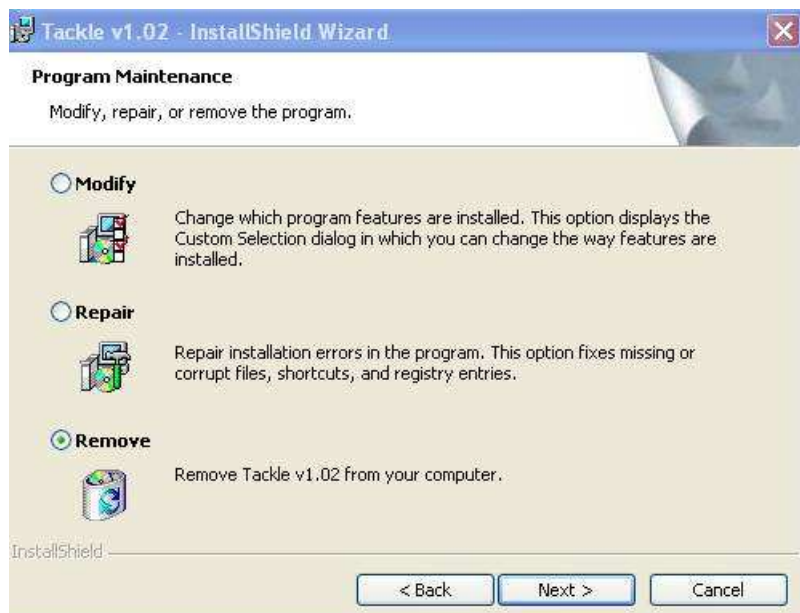


Then you should be able to go to <http://localhost/Tackle> without FireFox prompting for password and username.



· **Reinstalling Tackle**

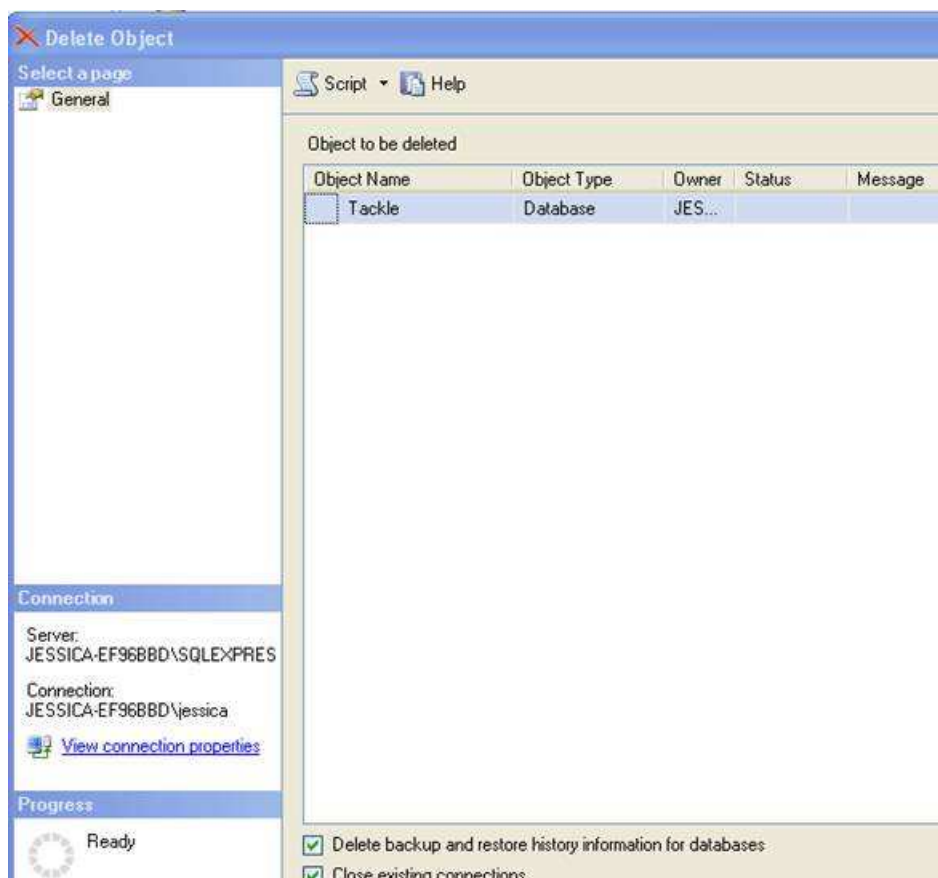
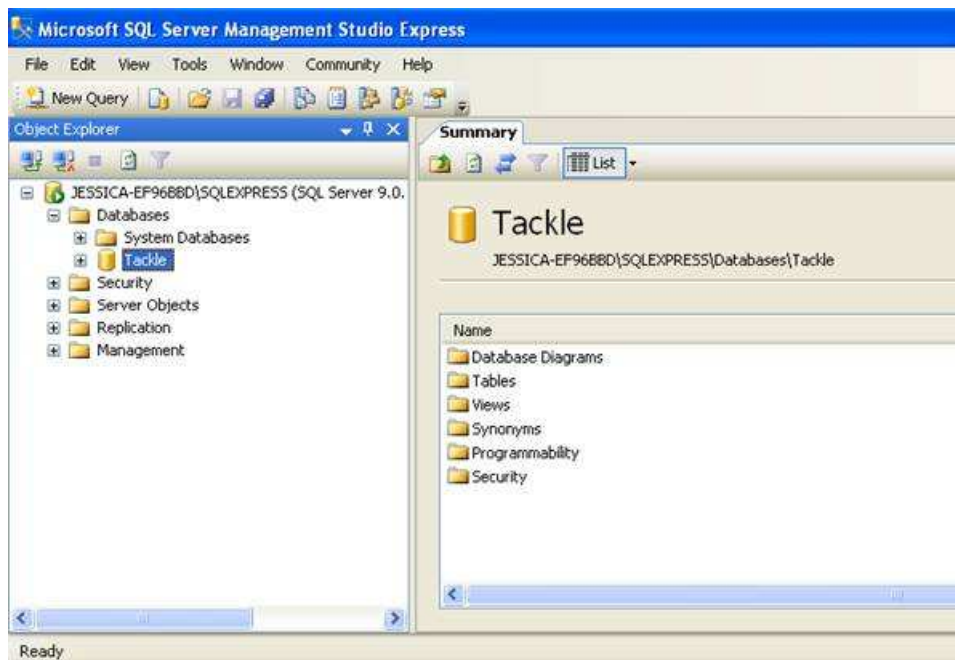
When the install just did not work and you need to start from a clean slate, first uninstall Tackle by running the install MSI and select remove.



The uninstaller does not remove the Tackle database, therefore Tackle database must be deleted manually. Login as an administrator (in this case, jessica) to SQL Server 2005 Express using SQL Server Management Studio



Then select the Tackle database by selecting SQL Server name (JESSICA-EF96BBD\SQLEXPRESS in this case), Database, and then Tackle. Right click on Tackle and select Delete.



[Back to Perceptual Complexity 1](#)

